



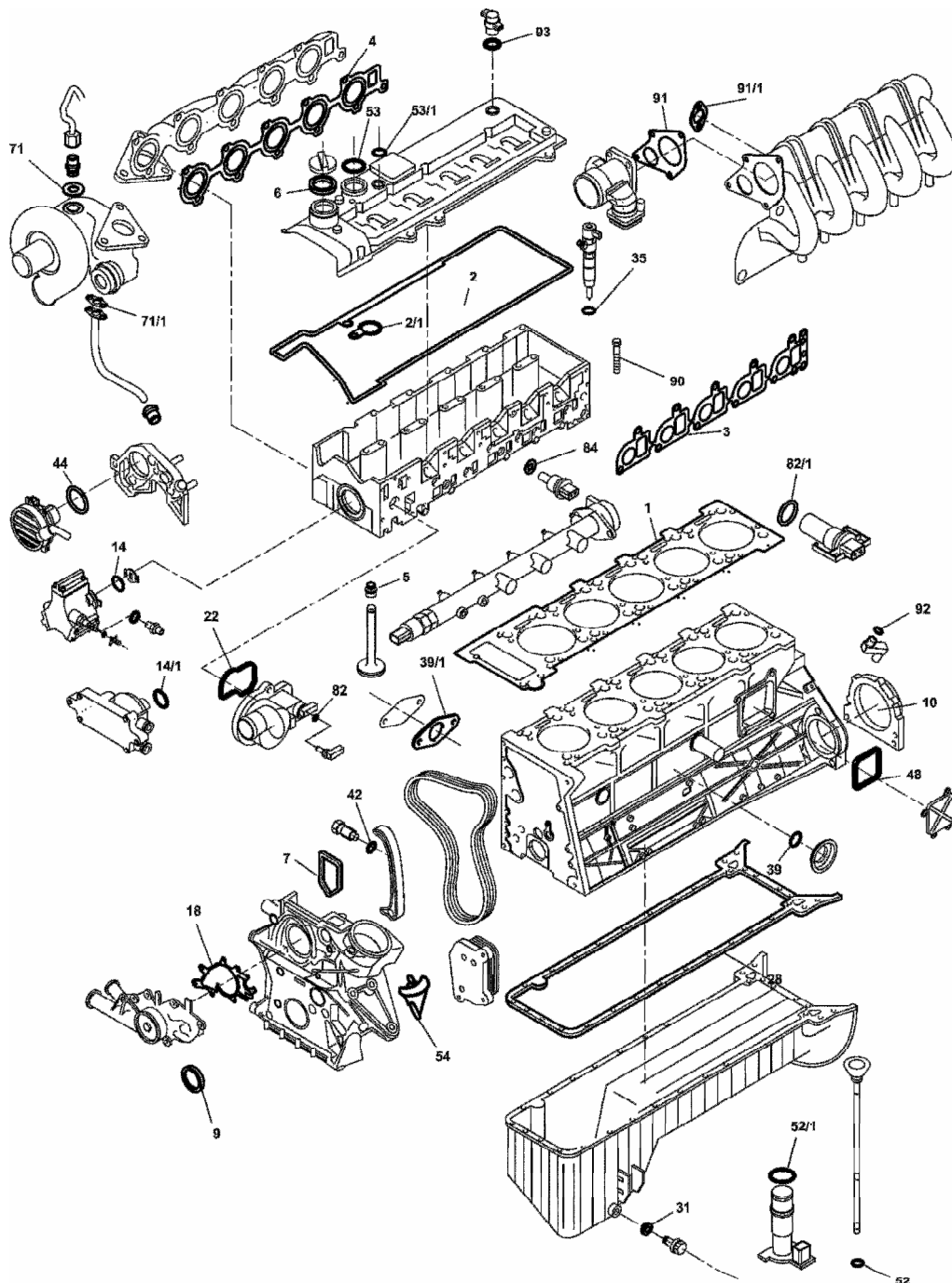
Das Original



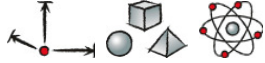



VSI 11/09



Neu

Mercedes-Benz | Dodge | Freightliner Sprinter OM 612.981



			#		
S ⊕ *	531.381	1x		–	→ Mot. 813930 
S ⊕ *	381.150	1x		–	Mot. 813931 → 
ES	024.081	1x	612 010 18 20	–	–
CS *	633.330	1x	612 010 14 05	–	–
VAS	687.510	1x	–	–	–
ZKHS	330.370	1x			→ Mot. 813930
ZKHS	a.A.	1x			Mot. 813931 →
ZKS	760.120	1x	–	–	–
1	762.821	1x	647 016 06 20	1,20 mm 88,8 Ø	–
1	612.332	1x	647 016 07 20	1,40 mm 88,8 Ø	–
1	376.390	1x	647 016 13 20	1,20 mm 89,3 Ø	–
1	376.400	1x	647 016 14 20	1,40 mm 89,3 Ø	–
2	a.A.	1x	612 016 00 21	–	→ Mot. 813930
2	a.A.	1x	647 016 01 21	–	Mot. 813931 →
2/1	a.A.	5x	611 016 02 21	–	–
3	433.112	1x	612 141 01 80	–	–
4	432.924	1x	612 142 03 80	–	–
5	830.489	20x	000 053 41 58	FPM	E/A
6	a.A.	1x	111 018 00 80	47,5x59x2,3 HNBR A	–
7	356.140	1x	611 015 01 80	Metall-Elastomer	–
9	424.841	1x	021 997 76 47 023 997 84 47	ASW RD PTFE 45x67x8	–
10	746.400	1x	611 010 02 14	SP LD PTFE 93 Ø	–
14	503.030	1x	012 997 07 45	44x3,0 FPM	–
14/1	a.A.	1x	018 997 19 48	26,5x30,7x2,1 ACM RD	–
18	365.360	1x	611 201 02 80	–	–
22	a.A.	1x	611 203 03 80	–	–
28	490.653	1x	647 014 00 22	–	–
31	115.100	1x	007603 014106	14x20x1,5 DIN 7603 CU A	–
35	924.867	5x	611 017 00 60	7,1x15x1,56 CU D	–
35	199.360	5x	–	7,1x15x1,76 CU D	Reparaturgröße repair size cote de réparation nivel de reparación livello di riparazione
35	199.340	5x	–	7,1x15x1,96 CU D	Reparaturgröße repair size cote de réparation nivel de reparación livello di riparazione
39	a.A.	1x	006 997 75 48	36,5x40,5x2 NBR RD	–
42	a.A.	1x	112 997 00 44	26,7x31,9x2 AL PR	–
44	a.A.	1x	668 997 01 45	53x2,0 FPM	–
48	a.A.	1x	611 159 04 80	EPDM PR	–
52	a.A.	1x	006 997 26 45	12x16x2 NBR RD	–
52/1	a.A.	1x	024 997 70 48	30,4x34,8x2,2 FPM RD	–
53	–	1x	611 997 06 45	–	–
53/1	–	1x	611 997 05 45	–	–
54	633.540	1x	611 184 02 80	ACM PR	–
71	a.A.	2x	007603 010406	10x15x1,0 Cu A	–
71/1	122.271	1x	611 187 06 80	–	–
82	a.A.	1x	022 997 98 48	8,6x2,5 EPDM RD	–
82/1	–	1x	601 997 04 48	–	–
84	242.608	1x	007603 014100	14x18x1,5 AL A	–
90	a.A.	12x	611 990 13 22	M 12x102x1,75	–
91	a.A.	1x	612 098 00 80	–	–
91/1	a.A.	1x	611 142 05 80	–	–