



# KS PERMAGLIDE® plain bearings Bearing in label printers

Sector: Printing industry, packaging industry

## Product used:

KS PERMAGLIDE® plain bearing bush  
design PAP ... P10

## Function

Label printers are used for labelling packaging, e.g. with barcodes, item numbers or other data. Label printers are often integrated in packaging machines.

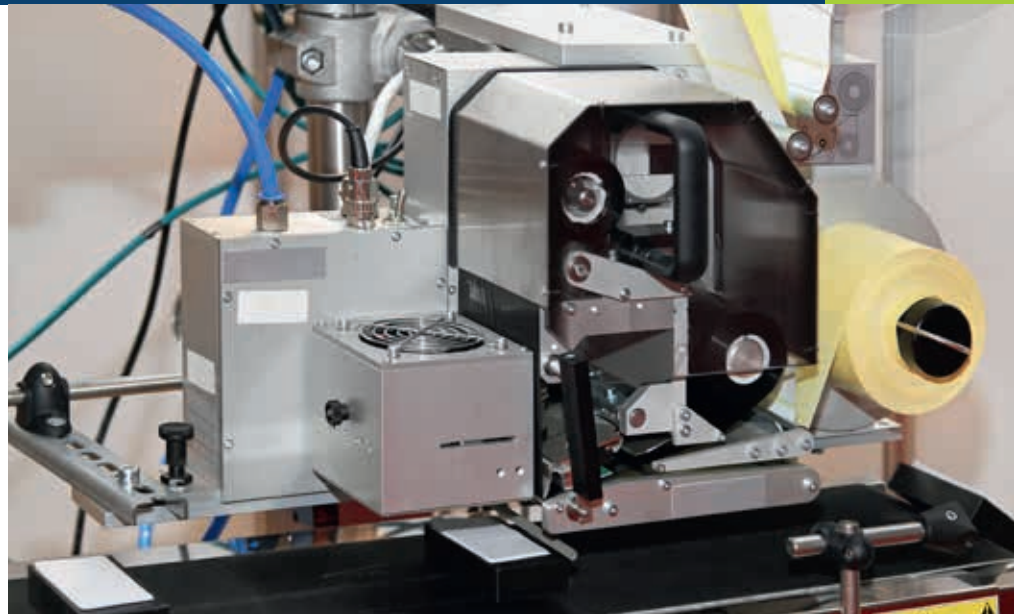
A stamp prints the ink from an ink ribbon onto the packaging. The stamp moves in an oscillating motion and is driven via a cam and a spring.

## Bearing of the shafts and stamp in label printers with KS PERMAGLIDE® P10 plain bearing bushes

The KS PERMAGLIDE® P10 plain bearing bushes are used in label printers for holding the swivelling shafts and the oscillating stamp. The plain bearings are suitable for swivelling and for oscillating movements.

## Advantage: Reliable function of the bearing with KS PERMAGLIDE® P10 plain bearings

- Maintenance-free, low wear
- Dry running, so no soiling from lubricant
- Insensitive to dirt
- Smooth running
- High durability
- Simple design
- Simple mounting by pressing into the housing
- No protection from twisting and shifting required



Label printer

## Description of material

KS PERMAGLIDE® P10 is a universal plain bearing material for both dry and lubricated applications. The composite, multi-layered material excels thanks to its high rigidity, durability, high chemical resistance and good emergency running properties. These characteristics are achieved to a great extent through the use of lead bronze sintered onto a steel base, and friction-lowering additives of fluoropolymer PTFE and the metal lead.

## Similar applications

Dry printer, dry printing device, transfer printer, thermal transfer printer, label printer, label writer, sticker printer, stamp applicator, labeller, packaging printer

## Further information on KS PERMAGLIDE® plain bearings

- KS PERMAGLIDE® catalogue, item no. 50003863-02
- KS PERMAGLIDE® OnlineShop [www.permaglide.com/onlineshop](http://www.permaglide.com/onlineshop)

KS PERMAGLIDE® plain bearing bush  
design PAP ... P10

